

Friday 23 February 2024

## Our vision

Valued - Inspired - Prepared

## Our values

We shape our learners to be:

Safely independent - Respectful citizens

Inquisitive thinkers - Confident communicators - Resilient learners

It was lovely to welcome everyone back on Monday. I have visited every class and spoken to as many learners and staff as possible, it sounds as though most of you all managed to have a restful break during half-term.

Already there has been so much going on this week, as you will read about below. The awful weather which we are experiencing at the moment has not been too impactful as we have only had to have a couple of indoor breaktimes. As you know and will appreciate, we try to get them out for some fresh air at least once a day. Therefore, can I remind you that it is imperative to send your child to school with adequate, suitable and named clothing. Coats, hats, scarves, gloves, waterproof trousers and even wellington boots would be beneficial with all this heavy rain!

Please do encourage your children to participate in the House competitions; it is egg decorating and book cover designing this term, see below for details. We will remind them regularly during the weekly assemblies too, they can earn up to 100 merits for winning so well worth it!

I wish you all a lovely weekend, whatever you have planned.

Yours sincerely



**Jamie Peacock**  
**Headteacher**

### **Across the School:**

Mrs Cantello started our new term with an SMSC assembly, all about Shrove Tuesday. We all had great fun having pancake races! Each school house raced against each other in a relay style competition. The winning learners had dojo points added to their house totals.

We then had super fun at our Valentines' Disco. Thank you to all the PTA members who organised it and made lasting memories for us all.

### **Lower School:**

It has been a strange start to the term in Lower School as we have been missing our friends who transitioned over to Baytree School. However, we have heard they are doing fantastically well already and have settled into their new surroundings. We wish them, and their families, all the luck in the world on their new educational journey.

Chester class recommenced their swimming sessions this week and all showed the Westhaven Way whilst away from the school grounds; we were all very proud of them.

Through the rest of Lower School, lots of focussed learning has been taking place and all learners have come back with a determined attitude to do their best.

### **Middle School:**

It's been wonderful to see the learners back in school and hear their stories of their half terms.

On Monday we started the term with a pancake race in assembly. Each house raced against each other to do a relay race and piece together a pancake in the frying pan. Great fun was had and winning houses had points added to their totals.

On Tuesday we all had a great time at the Valentines' Disco. There are definitely some fantastic dancers in Middle School! Thank you to the PTA for organising this.

### **Upper School:**

Upper School learners returned refreshed and ready to learn for term 4! Amongst wonderful focused learning, learners have had opportunities to smile. Monday assembly started the week demonstrating great pancake racing skills, with lots of cheering and encouraging each other on. A hint of competitiveness crept in accruing house points! Tuesday saw some learners move and groove at the disco, whilst others stood on the sides chatting 'to cool to dance'!

Year 11 GCSE Science group enjoyed a trip to Hinkley Point where they had the opportunity to see the real-life practical application of energy production. They toured Hinkley Point C, were able to ask questions and explore the visitor centre. Thank you to Ms Parker for organising this trip.

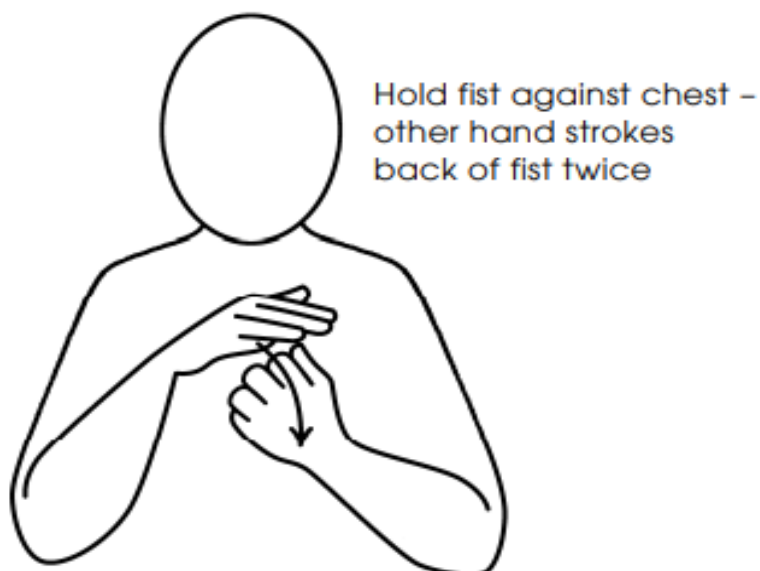
**Staff in the Spotlight: Miss H Parkins**

|   |  |
|---|--|
| <b>Favourite Book Quote</b>               | <i>"All our dreams can come true, if you have the courage to pursue them." - Walt Disney</i>                                   |
| <b>Favourite Quote about Reading</b>      | <i>"The more that you read, the more things you will know. The more that you learn, the more places you'll go." - Dr Seuss</i> |
| <b>Favourite Book to Read to Children</b> | The Lion Inside by Rachel Bright and Jim Field   |
| <b>Favourite Childhood Book</b>           | The Famous Five Series by Enid Blyton  |

**Word of this Week:**

|                     |            |
|---------------------|------------|
| <b>KS1</b>          | horrible   |
| <b>KS2</b>          | dire       |
| <b>KS3, 4 and 5</b> | horrendous |

**Sign of this Week:**



## Pet

### Maths Matters:

Can you find the chosen number from this square using the clues below?

|    |    |    |    |    |    |
|----|----|----|----|----|----|
| 1  | 2  | 3  | 4  | 5  | 6  |
| 7  | 8  | 9  | 10 | 11 | 12 |
| 13 | 14 | 15 | 16 | 17 | 18 |
| 19 | 20 | 21 | 22 | 23 | 24 |
| 25 | 26 | 27 | 28 | 29 | 30 |
| 31 | 32 | 33 | 34 | 35 | 36 |

1. The number is odd.
2. It is a multiple of three.
3. It is smaller than  $7 \times 4$ .
4. Its tens digit is even.
5. It is the greater of the two possibilities.

### Sports Desk:

A fantastic but very wet week has meant that we have only been able to get outside once this week, but our learners on Tuesday really enjoyed getting back outside and enjoying outdoor PE again. Lower School classes have moved back to revisiting gymnastics-based PE with travelling, jumping and balancing, whilst our Middle and Upper

School learners have enjoyed hockey and handball. I have been amazed at how much knowledge has been remembered from last year.

Trophy winners this week were:

- Lower School - Bath
- Middle and Upper School - York and Plymouth

Well done to all classes.

. **Headteacher Awards:**

- Ashanti from York class her for Phonics and SPaG work
- Daniel and Max from Leeds class and Stanley from Newcastle class for their diary entry writing in English
- Ben and Kaylum from London class for their English letter writing to pop stars!
- Tyreece and Ella from Nottingham for their wonderful art work
- Maximus and Lana-Rae from Cardiff for their fantastic ratio work in maths (They were both also awarded VIP badges in assembly)
- Kyra for her amazing art work linked to PSHE



To ensure that we can continue to provide a full catering service when faced with staffing challenges, we would be interested to hear from any parents/carers that might be interested in helping out as a Kitchen Assistant on an ad-hoc basis. Full training would be given in advance. This post would be subject to an enhanced DBS clearance and two satisfactory references and would be paid at a competitive hourly rate. This arrangement would constitute a zero hours contract with no guarantee of work. Please contact Trudy Hudson for further details.

**Family  
workshop**

**Term 4**



**Westhaven  
School**

**SEND workshop**

Led by Tammy Chaplin and Susan Cantello

**Where:** Westhaven School

**When:** Wednesday 6th March {9.00-10.00}

Please complete the following form to confirm attendance, and indicate what support may benefit you in this workshop. We hope to see you there!

<https://forms.gle/NKF4NjquPJHnZkN2A>



## Free first aid courses!

**With Pulse First Aid**

**A free first aid course for  
parents/carers with  
children of all ages.**

**Come along to any of  
our three upcoming  
sessions:**

**12 February  
18 February  
25 March**



**Clevedon Children's  
Centre, The Barn,  
Great Western Road,  
BS21 6HB**





# Westhaven School

## House Egg Decorating Competition

Term 4 2023/24 House Event



between Monday 19th February and Monday 25th March.



### Whole school:

- Use a drained real egg or a plastic/china egg.
- Decorate a single or multiple eggs.
- Make a scene to house your egg too if you wish.
- Be as creative as you can in your decorating using any materials you like.



Decorate an egg.



**Entries close Monday 25th March.**

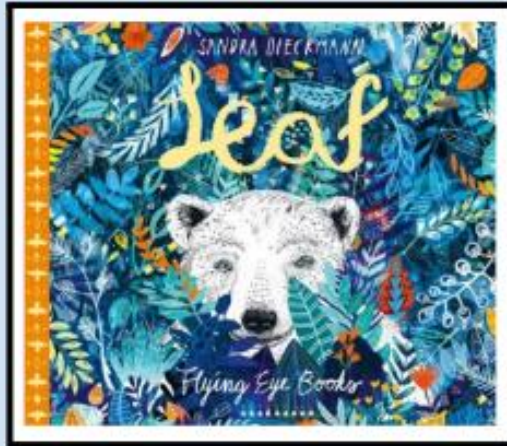




# Westhaven School

## Book of the term- Term 4

Leaf by Sandra Dieckmann



A link to a virtual copy of the book:

<https://www.youtube.com/watch?v=8UQ3pEE7PKE>

Joanna Page -CBeebies bedtime stories:

<https://www.youtube.com/watch?v=H-FK8HocVaU>

**Whole school house challenge:**

**DESIGN YOUR OWN  
BOOK COVER!**

Design your own book cover.

This can be digital or completed by hand, you can use an existing book as a starting point or make up your own.

**Tip:** The inside of a recycled cereal box makes a great book cover.

**Entries close Monday 25th March.**



# Save The Date

## 'A Day of SEND'



Wednesday 23rd October 2024

@ Priory Community School,  
WSM, BS22 6BP

**NORTH SOMERSET** **PCS** **WT**  
PARENT CARERS WORKING TOGETHER

**WESTHAVEN  
SCHOOL**



**IS A NUT-FREE  
SCHOOL**

We have some learners in our school who have nut allergies. *Anaphylaxis (allergic reaction)* can occur as a result of digestion, inhalation or any other contact with nut-based products.

For their safety, please can we request that you do not send your child into school with any nut-based products for packed lunches, break time snacks or for any other occasion. This includes products that may contain traces of nuts.

With very many thanks for your understanding and cooperation.

## Advanced Parenting Groups

Parenting isn't easy even when your child is well and happy. Sometimes all we need is a little advice and guidance to get us back on track when things are tricky.

The Family Wellbeing Parenting Team have an offer of 13 advanced parenting groups which are free to attend and run by trained facilitators. All groups are evidenced based meaning they employ tried and true methods built on research that demonstrate positive outcomes and are most likely the most reliable way to approach parenting.

For information on the advanced parenting groups please search for "North Somerset Advanced Parenting Groups" on your chosen search engine or scan the QR code below.

- Incredible Years Autism & Language Delay
- Incredible Years Preschool
- Incredible Years School Age
- D.A.R.T – Domestic Abuse Recovery Together
- Parents Plus: Adolescent Programme
- Parents Plus: Working Things Out
- Parents Plus: SEND
- Parents Plus: Parenting When Separated
- Non-Violent Resistance
- Mellow Parenting

For more information, please contact the Parenting Team:  
[parenting.groups@n-somerset.gov.uk](mailto:parenting.groups@n-somerset.gov.uk)





## The Parenting Village Coffee Morning

"It takes a village to raise a child" originates from an old African proverb and conveys the message that it takes many people to provide a safe and healthy environment where children can flourish.

The drop in is a relaxed and friendly place where parents and parenting specialists will be on hand to share resources, offer support, a listening ear or just spend time talking about what it's like to be a parent.

**When?** 1<sup>st</sup> Friday of each month

**Where?** Castle Batch Children's Centre, Bishop Avenue, Weston-super-Mare, BS22 7PQ

**What time?** 09:30 – 11:00

**When?** 2<sup>nd</sup> Tuesday of each month (9<sup>th</sup> Jan 24)

**Where?** Oldmixon Family Centre, Monkton Avenue, Weston-super-Mare BS24 9DA

**What time?** 09:30 – 11:00

**When?** 3<sup>rd</sup> Monday of each month

**Where?** The Barn, Great Western Rd, Clevedon BS21 6HB

**What time?** 11:00 – 12:30

*Parents of children of all ages welcome.*

*Free refreshments*

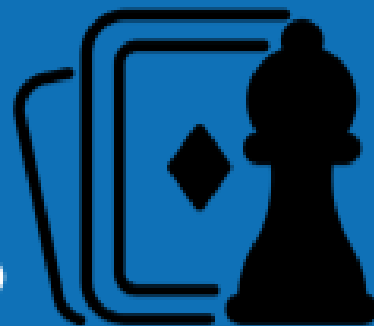
For more information, please contact the Parenting Team: [parenting.groups@n-somerset.gov.uk](mailto:parenting.groups@n-somerset.gov.uk)



people  
first



## GAMES GROUP



### Weston-super-Mare

Winter 2023—Spring 2024

December: 5th, 19th

January: 2nd, 16th, 30th

February: 13th, 27th

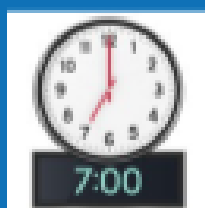
March: 12th, 26th

April: 9th, 23rd

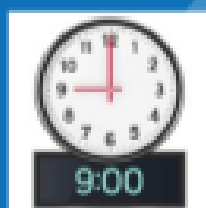
A free and friendly board games group for young people with a learning disability and/or autism.

NSPF groups are free of charge. Bring a game along if you wish.

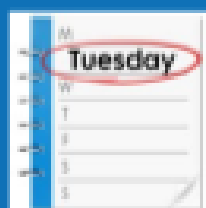
Start at    Finish at



7pm



9pm



At The Campus  
Highlands Lane  
Weston-super-Mare  
BS24 7DX

Empowering voices.  
Enabling choices.



Registered charity number 1159184

[communications@nspf.co.uk](mailto:communications@nspf.co.uk)  
[www.nspf.co.uk](http://www.nspf.co.uk)



## **Cycle lessons for young people with additional needs.**

**We have availability on Saturdays for free 1:1 cycle lessons, using our fantastic range of adaptive bikes and trikes. The 30 minute sessions are a great way to introduce cycle skills and develop further confidence.**



**Email [strawberrylineprojects@gmail.com](mailto:strawberrylineprojects@gmail.com) for further information**



### **Diary Dates:**

|                       |  |
|-----------------------|--|
| Thursday 7 March 2024 | World Book Day   |
| Friday 22 March 2024  | M&M Production of Oliver Twist   |
| Friday 19 July 2024   | Last day in school for learners this academic year<br>(Monday 22 and Tuesday 23 July are INSET days) |

**North Somerset Term Dates - 2023/2024:**

|        |                                |
|--------|--------------------------------|
| Term 3 | 04 January 24 - 09 February 24 |
| Term 4 | 19 February 24 - 28 March 24   |
| Term 5 | 15 April 24 - 24 May 24        |
| Term 6 | 03 June 24 - 23 July 24        |

**Bank Holidays (school closed to all pupils) - 2023/2024:**

|                      |            |
|----------------------|------------|
| May Day Bank Holiday | 6 May 2024 |
|----------------------|------------|

**Westhaven INSET Days (school closed to all pupils) - 2023/24:**

- **Monday 22nd July 2024**
- **Tuesday 23rd July 2024**

**North Somerset Term Dates - 2024/2025:**

|        |  |
|--------|--|
| Term 1 | Monday 02 September 2024 to Friday 25 October 2024 |
| Term 2 | Monday 04 November 2024 to Friday 20 December 2024 |
| Term 3 | Monday 06 January 2025 to Friday 14 February 2025  |
| Term 4 | Monday 24 February 2025 to Friday 04 April 2025    |
| Term 5 | Tuesday 22 April 2025 to Friday 23 May 2025        |
| Term 6 | Monday 02 June 2025 to Tuesday 22 July 2025        |

**Bank Holidays (school closed to all pupils) - 2024/2025:**

|                      |                    |
|----------------------|--------------------|
| May Day Bank Holiday | Monday 05 May 2025 |
|----------------------|--------------------|

**Westhaven INSET Days (school closed to all pupils) - 2024/25:**

- **Monday 2<sup>nd</sup> September 2024**
- **Tuesday 3<sup>rd</sup> September 2024**



- **Friday 8<sup>th</sup> November 2024**
- **Monday 6<sup>th</sup> January 2025**
- **Monday 21<sup>st</sup> July 2025**
- **Tuesday 22<sup>nd</sup> July 2025**