

Our vision

Valued - Inspired - Prepared

Our values

We shape our learners to be:

Safely independent - Respectful citizens

Inquisitive thinkers - Confident communicators - Resilient learners

Welcome back to Term 2 everyone, I do hope you all managed to have a lovely and restful half term. Well, yet again the week seems to have flown by and all the learners returned with a positive attitude and have continued to work hard and display the school values in all that they do.

There has been lots of inspirational work going on across the school and despite Storm Ciaran's best efforts to unsettle them, they have remained calm and focussed. I am very proud of all the learners every single day. On that note, we are more than likely to experience more inclement weather over the next few weeks, please ensure you send your children to school dressed appropriately. A coat is a must, but a hat, scarf and gloves would be advisable.

It has been a different week for me personally, as I have been out of school almost as much as I have been in. On Wednesday I visited another specialist school in Bristol called Briarwood. I am working with 6 Headteachers from the region, as we have set up a challenge partner group whereby we'll visit each other's schools on a termly basis to drive school improvement. Yesterday I was out all day in Plymouth updating my Crisis Prevention Institute-Safety Intervention training.

Have a lovely weekend,

Yours sincerely



Jamie Peacock
Headteacher

Around the School

We had a number of visitors this week to our classes as we were interviewing for positions within key stages 2 and 3. All of our learners made the candidates feel very welcome and part of our Westhaven family.

It is also the start of 'Nonfiction November' so we have been immersing ourselves in many information texts to supplement our learning.

With the changing weather, please can you remember to send your child to school with a suitable coat. We have had many learners this week getting very wet outside as they have had no coat in school.

Lower School:

It has been a wonderfully wet and fun start to our new term.

We had colleagues visiting from the Local Authority to conduct a review of our provision and the findings were extremely positive. They were very impressed with the level of support and adaptations made to meet the learners needs. As always, the Lower School team will continue to strive to provide the best possible education offer.

We were very sad to say goodbye to Mr Ashworth this week. He has been part of the furniture at Westhaven since February 2012 and has changed the lives of many learners he has encountered along the way. He has also raised thousands of pounds for the school through his work with the PTA. We are extremely grateful for all he has done for and brought to the school and he will be sorely missed. However, we wish him all the very best for his adventures that come next.

Middle School

Middle school has jumped straight into learning again this term. During visits to their classrooms I've seen a wealth of positive learning behaviour and learners who are proud of what they have achieved. Our love to listen book this term is Wolf Brother by British author Michelle Paver. It is set thousands of years ago and features Torak, a 12 year old boy who's only companion is a wolf cub. When I have popped into classes whilst this book is being read the learners have clearly been enjoying it.

We have also had some interviews for support staff this week; the learners have been wonderful with so many visitors and the feedback from the candidates about our learners was amazing. Our head learners also did a wonderful job helping the candidates find their way around the school.

Upper School:

Upper School learners have returned to Term 2 ready to learn. Highlights to note this week were at break times, lots of learners enjoying football even in the wild windy wet

weather we experienced with storm Ciaran! Plus a jet (I believe) flew over and momentarily paused the usual playtime sounds, whilst nearly everyone turned to view. It was wonderful having conversations about the sound of the engine afterwards.

As the weather turns, please can I remind learners to bring coats to school to wear at break and lunchtimes.

College Open days / evening for November, please see further information on the links below:

Bridgwater College

<https://www.btc.ac.uk/events/>

Weston College

<https://www.weston.ac.uk/node/74785>

City of Bristol College

<https://www.cityofbristol.ac.uk/events/26-november-independent-training-facilities-open-event/>

Staff in the Spotlight: Mrs M Perry

Favourite Book Quote	<i>"People say nothing is impossible, but I do nothing all the time." Winnie the Pooh</i>
Favourite Quote about Reading	<i>"In the case of good books, the point is not to see how many of them you can get through, but rather how many can get through to you." Mortimer J.Adler</i>
Favourite Book to Read to Children	David Walliams books!
Favourite Childhood Book	Let's go home little bear

Assembly Focus on Monday:

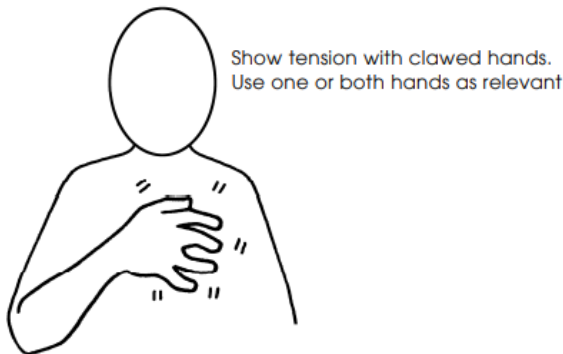
Lower School	<p>Online safety and social media safety and awareness with the TOPAZ child exploitation prevention team</p> <p>Parents and carers are invited to attend the assemblies and remain for question and answer sessions after.</p> <p>The classes taking part are split into two groups:</p> <p>Bristol, London, Liverpool, Nottingham, Manchester Leeds, Newcastle, York and W6 - 8.45 to 9.15 Assembly with a question and answer session for parents and carers from 9.15 to 9.40.</p> <p>Hull, Chester, Exeter, Cardiff and Plymouth - 9.45 to 10.15 Assembly with a question and answer session for parents and</p>
Middle School	
Upper School	

	carers from 10.15 to 11.45.
--	-----------------------------

Word of this Week:

KS1	flame
KS2	blaze
KS3, 4 and 5	conflagration

Sign of this Week: frightened



Maths Matters:

An autumn maths fact! Each tree has an average of 200,000 leaves, but this can be lower or higher depending on the species, size, age, and current weather conditions.

Take your child out and try and catch some falling leaves!

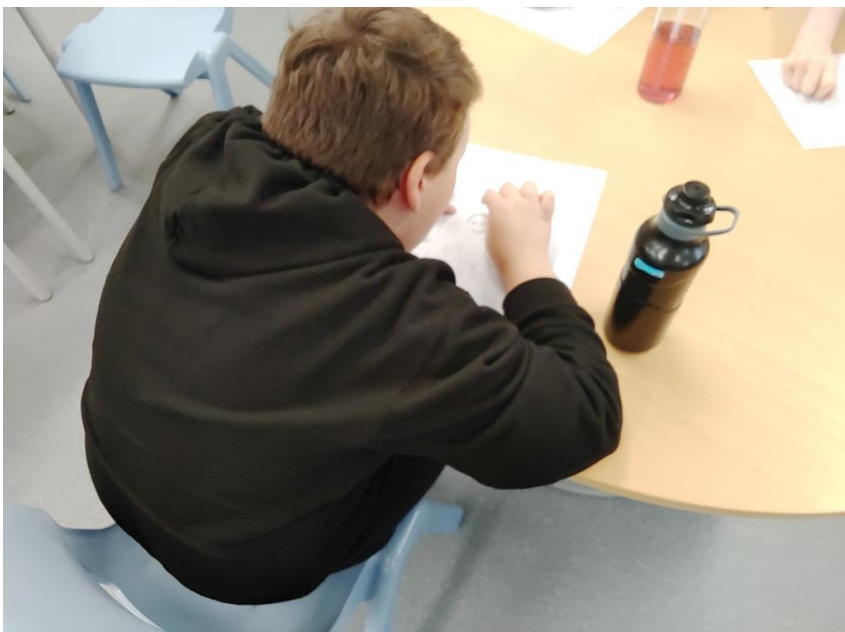


Sports Desk:

A brilliant first week back, our learners from lower school have started their Gymnastics topic, whilst middle and upper school have also started gymnastics alongside circuit training which is part of our health and related fitness topic. Our learners have been able to explain so well the importance of a healthy and active lifestyle which has been amazing to hear. This week's trophy winners were- LS Bath - M&US Newcastle & Leeds. Well done to all classes.

Picture Gallery:





Book of the term

The Snowman by Raymond Briggs



House Challenges:

Lower school:

Build your own Snowman.

Create your own Snowman using materials of your choice. Your Snowman should be 3D.

Listen to the story: <https://www.youtube.com/watch?v=fTWIBYP3oHQ>
Get inspired: <https://walkingwiththesnowman.co.uk/event/hitchin-2022/>

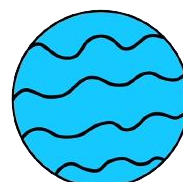
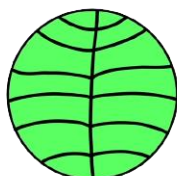
Middle & Upper school:

Build a model of a 'snowman chiller'

Create your own device that will keep your Snowman cold and prevent him from defrosting.

Listen to the story: <https://www.youtube.com/watch?v=fTWIBYP3oHQ>
Watch the short film:
<https://www.youtube.com/watch?v=ZE9KpobX9J8>

Deadline: Thursday 14th December 2023



Term 2 House event

Christmas Spelling bee!



Each class will be given a list of words that are matched to their reading and spelling phases.

These spellings will be placed into planners.

Learners are advised to practise spellings at home. Some learners will be provided with extra spelling support sheets to aid them in the revision of these.

Learners will then get the option of completing their spelling bee in their classrooms or joining classes for a whole phase assembly competition.

Competition date:

Week commencing 4th December.

There will be a winner from **each class!**



**Family
workshop**

Term 2



**Westhaven
School**

Speech and Language

Led by Michelle Hamill (Consultant Speech and Language Therapist from Sirona)

Where: Westhaven School

When: Monday 6th November {9.15-10.15}

What to expect: Speech and language provision at Westhaven -
Levels of support - Aided language displays - Much more!



Friends of Westhaven PTA Christmas Fair



Friday 1st December, 4pm - 6pm

School Hall - Westhaven School BS23 4UT

Raffle, Grotto, Stalls, Food & Refreshments.

All welcome - Free Entry!

See you soon!



We have some learners in our school who have nut allergies. *Anaphylaxis (allergic reaction)* can occur as a result of digestion, inhalation or any other contact with nut-based products.

For their safety, please can we request that you do not send your child into school with any nut-based products for packed lunches, break time snacks or for any other occasion. This includes products that may contain traces of nuts.

With very many thanks for your understanding and cooperation.

Weekend Walks

peoplefirst 

A free and friendly group for young people aged 16-25 with a learning disability and/or autism

<u>Date</u>	<u>Location</u>	<u>Start point</u>
Saturday 14.10.2023	Weston-super-Mare Pier to Pier	In front of The Grand Pier
Sunday 29.10.2023	Clevedon Poet's Walk	Salthouse field 'train station'
Saturday 11.11.2023	Weston-super-Mare Worlebury woods	Worlebury Woods car park
Sunday 26.11.2023	Portishead Docks and coast	Parish Wharf Leisure Centre
Saturday 09.12.2023	Weston Sand Bay	Sand Bay car park & bus stop
Sunday 16.12.2023	Clevedon 'Coleridge' walk	Clevedon sea front bandstand
Saturday 06.01.2024	Weston-super-Mare Uphill	Uphill Boatyard entrance
Sunday 21.01.2024	Nailsea Ty Sculpture Trail	Sculpture Trail car park



to



Come and meet people and keep fit. Please arrive at the start point ready for 10:00am. We hope to see you there.



01934 426086

Empowering voices.

Enabling choices.



www.nspf.co.uk
communications@nspf.co.uk
The Campus, Highlands Lane,
Weston-suoer-Mare, BS24 7DX

Monday 6th November 2023	SALT Family Workshop 9.15am - 10.15am
Friday 17 November 2023	Children-in-Need
Friday 1 December 2023	Sleeping Beauty Touring Pantomime in
Friday 1 December 2023	Westhaven Christmas Fayre
Friday 15 December 2023	1.30pm Christmas Showcases for Lower School and Middle School classes - parents and carers welcome
Friday 22 March 2024	M&M Production of Oliver Twist

North Somerset Term Dates - 2023/2024:

Term 1	04 September 23 - 20 October 23
Term 2	30 October 23 - 20 December 23
Term 3	04 January 24 - 09 February 24
Term 4	19 February 24 - 28 March 24
Term 5	15 April 24 - 24 May 24
Term 6	03 June 24 - 23 July 24

Bank Holidays (school closed to all pupils) - 2023/2024:

May Day Bank Holiday	6 May 2024
----------------------	------------

Westhaven INSET Days (school closed to all pupils) - 2023/24:

- **Monday 4th September 2023**
- **Tuesday 5th September 2023**
- **Monday 30th October 2023**
- Thursday 4th January 2024
- Monday 22nd July 2024
- Tuesday 23rd July 2024

North Somerset Term Dates - 2024/2025:

Term 1	Monday 02 September 2024 to Friday 25 October 2024
--------	--

Term 2	Monday 04 November 2024 to Friday 20 December 2024
Term 3	Monday 06 January 2025 to Friday 14 February 2025
Term 4	Monday 24 February 2025 to Friday 04 April 2025
Term 5	Tuesday 22 April 2025 to Friday 23 May 2025
Term 6	Monday 02 June 2025 to Tuesday 22 July 2025

Bank Holidays (school closed to all pupils) - 2024/2025:

May Day Bank Holiday	Monday 05 May 2025
----------------------	--------------------